

POWERFLEX®

PART NUMBER

PFF85-504

DESCRIPTION

LOWER ENGINE MOUNT INSERT

INSTALLATION GUIDE

Contents (parts per pack):

1 x Polyurethane Bush

1 x 38mm Diameter Washer 1 x 83mm Diameter Washer

Please read the complete fitting instructions and check package components before fitment. These fitting instructions are to be used as a guide and in conjunction with workshop manual.

It is recommended that:

- all work to be carried out by a licensed technician;*
- all safety precautions adhered to;*
- wheel alignment to be checked and adjusted as required after any suspension work.*
- All fasteners must be tensioned to manufacturer's torque settings.*



PFF85-504 fits this shape bush



Fitting Instructions:

1. Remove the bolt from the bush.

Note: the manufacturer's bolts are stretch bolts and new bolts are recommended on re-fit.

2. Line up the bush to the voids in the bush.

3. Push the insert into the bush until the base of the insert is level with the bush.

4. Place the small washer into the hole at the base of the insert, as shown in Figure 1 - this will act as a spacer so as not to crush the base of the insert.

5. Place the large washer over the small washer, as shown in Figure 2, and then re-fit the bolt to the bush and tension all hardware to manufacturers recommended torque settings.



Figure 1

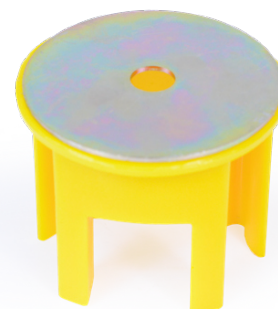


Figure 2