

POWERFLEX®

PART NUMBER

PFR12-510

DESCRIPTION

REAR LOWER ARM FRONT BUSH

INSTALLATION GUIDE

Contents (parts per pack):

2 x Polyurethane Bushes 1 x PTFE/Silicone Grease

2 x Stainless Steel Sleeves 2 x Mild Steel Washers

Please read the complete fitting instructions and check package components before fitment. These fitting instructions are to be used as a guide and in conjunction with workshop manual.

It is recommended that:

- all work to be carried out by a licensed technician;
- all safety precautions adhered to;
- wheel alignment to be checked and adjusted as required after any suspension work.
- All fasteners must be tensioned to manufacturer's torque settings.

Fitting Instructions:

1. Remove the original rubber bush from the front position of the rear lower arm.
2. Clean any dirt and corrosion from the bore of the arm and file off any sharp edges.

Tip: apply some washing up liquid to the polyurethane bush before fitting for ease.

3. Push in the polyurethane bush with the smaller chamfered edge being pushed in first into the bore of the arm (Figure 2).
4. Apply some of the supplied grease and press in the stainless steel sleeve so that it sits flush.
5. Place the mild steel D washer on top, making sure the flat end of the washer faces towards the back of the vehicle.

Note: the bore of the washer and the bore of the sleeve should be aligned, with the D shaped washer being held in the position in figure 1 while being tightened.

6. Refit the rear lower arm back to the vehicle and tension all hardware to manufacturers recommended torque settings.

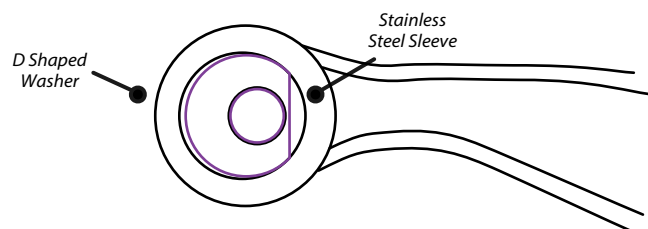


Figure 1 - top view showing how the D shaped washer aligns with the stainless steel sleeve. Hold the D-shaped washer in this position as it is tightened.

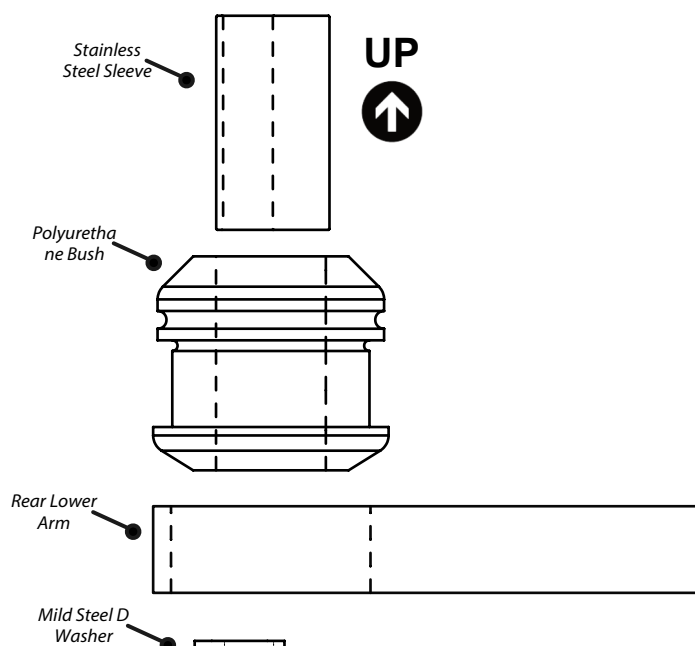


Figure 2